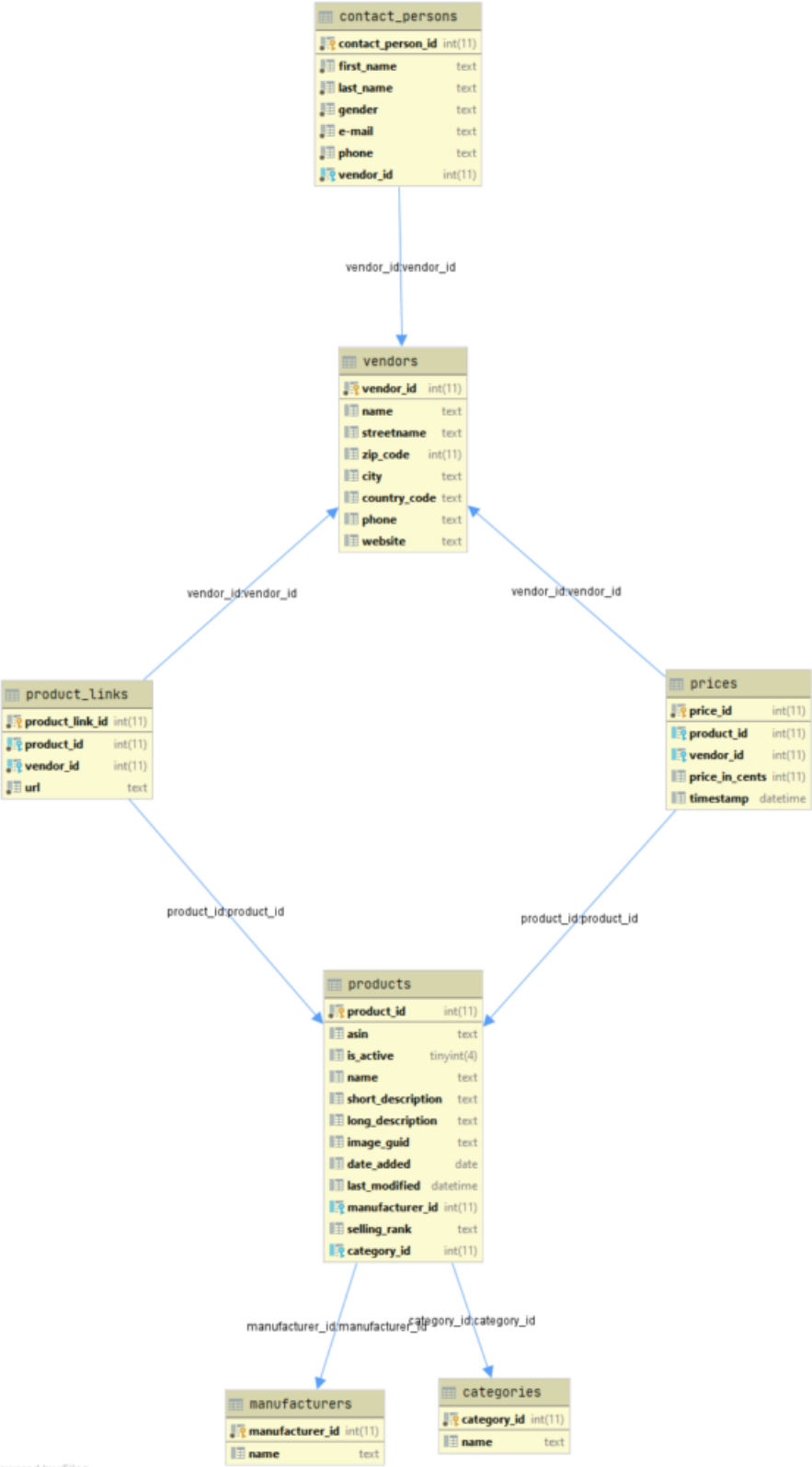


Hello there!

This week it gets *visual* at Betterzon.

We got together and thought about ways to share our ideas about the structure of some parts of the project in a visual way.

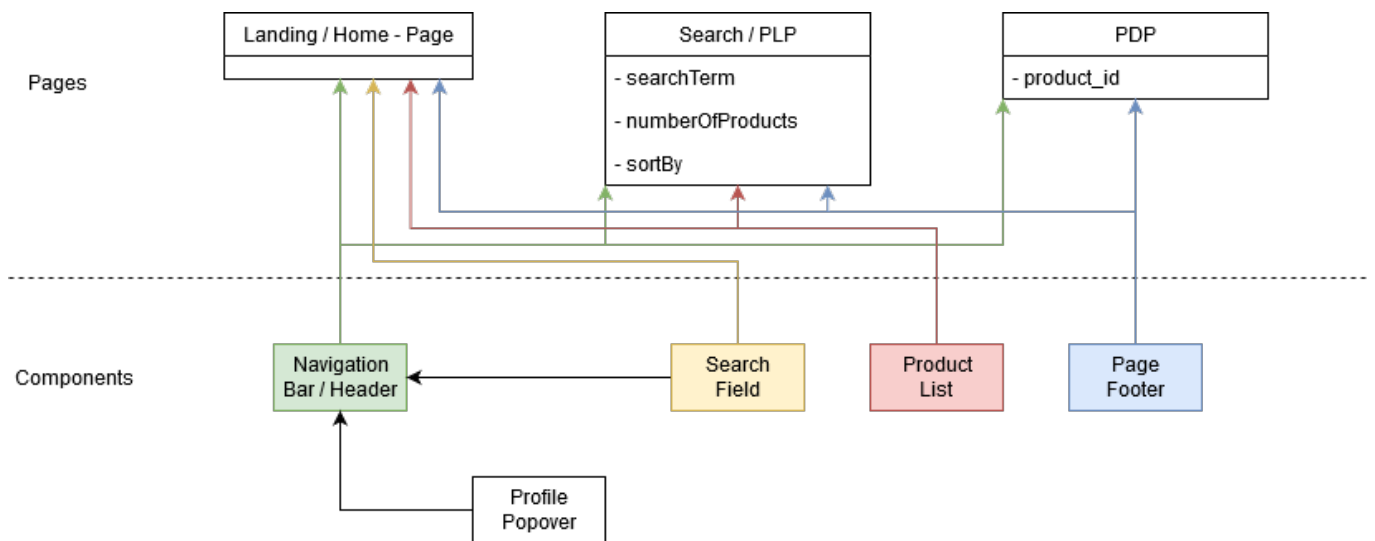
Since our codebase is not very large at the moment, we thought that our ERM might be interesting for you.



ERM

Our database will be a crucial part of the project, so we put a considerable amount of thought into our data model. But if you see anything that can be improved, feel free to let us know!

We also created a class diagram for our front end components.



Front end components

In the top half of this diagram, you can see our page components, so the components that result in a whole page, e.g. the Landing Page, the Product List Page (PLP) or the Product Detail Page (PDP). In the bottom half of the diagram, we outlined the components that are used on said pages.

We want to make the sure that the components are “reusable” in different parts of the website.

The Product List component for example is supposed to be used for search results, but also on the landing page to display popular searches and good deals.

I guess that’s it for this week. Stay tuned for more exciting news ☐